

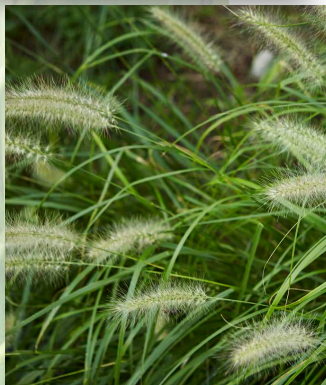
Overall 700 WDG™



Active Ingredients:

Imazamox 35% + Imazethapyr 35%

Overall 700WDG™ is an early post emergence herbicide for the control of broadleaf weeds and grasses in field peas, soybeans and faba beans



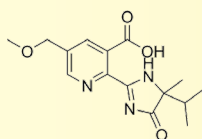
Overall 700WDG™ Characteristics

- Imazamox and Imazethapyr are widely used as selective herbicides with excellent control level.
- Suitable for use in high value crops and against a variety of harmful broadleaf weeds and grasses.
- Overall 700WDG has demonstrated outstanding field efficacy.

Chemical Information

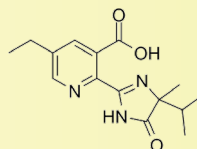
Imazamox and Imazethapyr belong to the chemical family of imidazolinones and are widely used as selective herbicides with excellent control level. The mode of action of imidazolinones is through inhibition of enzyme acetolactate synthase (ALS) activity, the first common enzyme in the biosynthetic pathway of valine, leucine and isoleucine. Susceptible weeds stop growing and eventually die.

Imazamox



- **IUPAC Name:** 5-(methoxymethyl)-2-(4-methyl-5-oxo-4-propan-2-yl-1H-imidazol-2-yl)pyridine-3-carboxylic acid
- **Chemical formula:** C₁₅H₁₉N₃O₄
- **HRAC/WSSA Group:** 2, Imidazolinones

Imazethapyr



- **IUPAC Name:** 5-ethyl-2-(4-isopropyl-4-methyl-5-oxo-4,5-dihydro-1H-imidazol-2-yl)nicotinic acid
- **Chemical formula:** C₁₅H₁₉N₃O₄
- **HRAC/WSSA Group:** 2, Imidazolinones

WDG Formulation

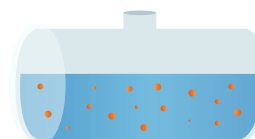
Overall 700WDG is formulated as WDG (Water Dispersible Granule) formulation:

- WDG formulations are an alternative to WP formulations reducing dust generated at product handling resulting in safer handling.
- Safer for health: WDGs are much less dusty than WP formulations.
- Dissolves quickly when added to the spray tank.
- Delivery of the active ingredients to the target weeds is more effective.



WDG Formulation
Granules containing active ingredients and surfactants

Farmer dilutes WDG before spraying



Spray Tank
In the spray tank a spontaneous milky emulsion forms



Application Rate



Crop	Weeds	Application rate	Notes
Soybeans	Broadleaf weeds and annual grasses	45-80 gr/Ha	Apply as a single post-emergence application. Application should be from 1-3 true leaf stage and after weeds have emerged. Apply when broadleaf weeds are from the cotyledon to 4-leaf stage and when grassy weeds are at the 1-4 true leaf or early tillering.
Faba beans	Broadleaf weeds and annual grasses	45-80 gr/Ha	Apply as a single post-emergence application. Application should be from 1-6 leaf stage and after weeds have emerged. Apply when grassy and broadleaf weeds are at the 1-4 true leaf stage.
Field Peas	Broadleaf weeds and annual grasses	45-80 gr/Ha	Apply as a single post-emergence application. Application should be from 1-6 leaf stage and after weeds have emerged. Apply when broadleaf weeds are from the cotyledon to 4 leaf stage and when grassy weeds are at 1-4 true leaf or early tillering

Important Note:

The indicated crops and recommended rate of application mentioned in this Product informative sheet may not be applicable in the country where the product is intended to be used. User must refer and use the product only as per the official registration at the country of use and the approved uses and rates by the authorized authorities. The supplier will not be responsible or liable if the product is used on crops which are not listed on the official label as approved the ministry of agriculture at the country of use.

The following weeds can be controlled in adequate levels after applying Overall 700WDG:

Barnyard grass, Chickweed, Cleavers, Crabgrass, Fall panicum, Flixweed, Green smartweed, Hemp-nettle, Kochia, Lamb's-quarters, Persian dandelion, Proso millet, Redroot pigweed, Shepherd's purse, Stinkweed, Stork's bill, Volunteer barley, Volunteer corn, Volunteer tame mustard, Volunteer tame oats, Volunteer wheat, Witchgrass, Yellow foxtail

Direction for use

- Do not mix with foliar or liquid fertilizers
- Do not apply if the crop is under stress
- Do not apply under conditions which favor runoff or wind erosion of soil containing this product to non-target areas
- Do not apply this product with any type of irrigation system
- Avoid application if rain is expected within the next few hours
- Apply the product once per year
- The product should be stored in a cool, dry place above 5°C.

Grazing Restriction: To avoid residue effect, do not graze or feed forage from treated areas for 4 weeks following application

Phytotoxicity - It is not possible to evaluate all plant varieties and cultivars and/or local plant species and varieties for tolerance to the active ingredients in the Product. Therefore the user must test for possible phytotoxic response by treating small and limited number of plants/crop at the recommended use rate prior to initiating large scale use. If the plants/crop shows phytotoxic response of any kind, user should consult with the Supplier prior to initiating large scale use.

- Post-emergence application of Overall 700 WDG might result in temporary scorching of the crop. Plants overgrow it quickly and doesn't have any effect on the final yield.

Overall 700 WDG is a trademark of Kenagro Ltd
Overall 700 WDG PIS is a copyright of Kenagro Ltd © 2023

Disclaimer: This information and all further technical advice is based on our present knowledge and experience and approvals from the registration authorities. However, it implies no liability or other legal responsibility on our part, including with regard to existing third party intellectual property rights, especially patent rights. In particular, no warranty, whether express or implied, or guarantee of product properties in the legal sense is intended or implied. We reserve the right to make any changes according to technological progress or further developments. In the event of any discrepancies between the information stated herein or any other information source and the information stated on the product label, the information stated on the product label will prevail. The customer/user is not released from the obligation to conduct careful inspection and testing of products. Performance of the product described herein should be verified by testing, which should be carried out only by qualified experts in the sole responsibility of the customer on a small scale plot. Reference to trade names used by other companies is neither a recommendation nor does it imply that similar products could not be used.



KENAGRO LTD,
Agias Fylaxeos & Zinonos Rossidi 2,
2/F, P.C. 3082 Limassol, Cyprus
E-mail: info@kenagro.lt.com

Distributor



Precision Farming Holdings Ltd.
Apollo Park Unit 3B, Mwembeshi Rd Extension,
Box 34793, Lusaka, ZAMBIA
Tel: +260966212729/+260979772729