

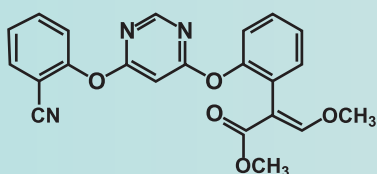
Protect Combi™

Active ingredients:

Azoxystrobin 200 gr/lit + Cyproconazole 80 gr/lit SC

Protect Combi™ is a novel, broad spectrum, fungicide, with both protective and curative properties against Rust, Early and Late blight, Ascochyta, Downy mildew and Powdery mildew in a wide range of crops.

Azoxystrobin

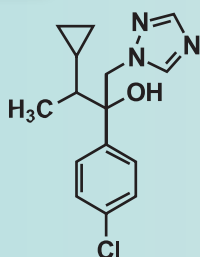


- Strobilurin, QoI-fungicides (Quinone outside Inhibitors).
- Mode of Action: Inhibition of mitochondrial respiration in fungi. It inhibits spore germination, mycelial growth, and spore production of fungi.
- FRAC Code: 11
- Target Site and Code: C3 - complex III: cytochrome bc1 (ubiquinol oxidase) at Qo site (cyt b gene)

Mode of Action

- Azoxystrobin is a systemic fungicide. It is absorbed through the roots and foliage, and is translocated in the xylem to the stems and leaves, or through leaf surfaces to the leaf tips and growing edges.
- Azoxystrobin is active at very low doses against a wide range of fungal pathogens.
- Azoxystrobin controls foliar and soil-borne diseases including downy and powdery mildew, early and late blight, and pathogens like Sclerotinia, Alternaria, Ascochyta, Pythium and Rhizoctonia on many crops.

Cyproconazole



- Triazole, DMI-fungicides (DeMethylation Inhibitors)
- Mode of Action: Systemic fungicide that disrupts the sterol biosynthesis in membranes.
- FRAC Code: 3
- Target Site and Code: G1: C14- demethylase in sterol biosynthesis (erg11/cyp51)

Mode of Action

- Cyproconazole is a broad spectrum systemic fungicide with protective, curative, and eradicant action.
- Cyproconazole is absorbed rapidly by the plant, with translocation acropetally.
- Cyproconazole is used as a foliar fungicide for the control of members of the Aschomycetes, Basidiomycetes and Deuteromycetes families, including Septoria, Rust, Powdery mildew, Rhynchosporium and Cercospora.



Protect Combi™ advantages and characteristics

- Excellent protective and curative action against a wide range of diseases
- Prevents fungal sporulation, disrupting the biological cycle of the fungi preventing secondary infestations.
- Systemic and Translaminar properties
- Contains two highly synergistic and complementary Active Ingredients
- Rainfast ability due to the special emulsifiers
- Long lasting, residual protection
- Improves performance and quality

Application rate

Crops	Diseases	Rate of application, Spray volume/20L	Timing and frequency of application
Wheat	Yellow Rust and Stem Rust	0.75L/Ha in 200L water; 75ml/20L of water	Start treatment application after observing initial disease incidence. Make 2 applications at 7 days interval.
Snow peas	Ascochyta leaf spots	0.25L/Ha in 800L water; 6.25ml/20L of water	

Application notes:

- **Protect Combi™** is recommended to be applied preventively or at the early stages of the disease development.
- Ensure thorough plant coverage.
- For best results, use 500 – 1000 lt of spraying mixture per hectare.
- Maximum number of application per crop within a growing season: 2
- Better to use early in the morning or late in the evening. Avoid high temperatures.

Field trials

Extensive field trials have proven the efficacy of **Protect Combi™** against a wide range of diseases.

In Belgium (2014) **Protect Combi™** was tested for the control of Rust in wheat.

The results are depicted in the following graph:



Control



Treated with **Protect Combi™**

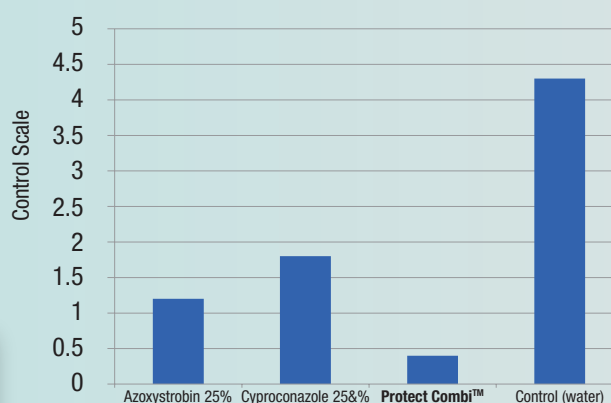


Figure: The results were expressed in a 0-5 scale and a control was included (0: Total Control and 5: Complete Infestation)

Disclaimer: This product must be used strictly as directed and in accordance with the instructions appearing on the label. The supplier accepts no liability other than as indicated in the Supplier's 'terms and conditions of sale' and the warranty clauses indicated on the product label. Sellers guarantee is limited to the terms set out on the label and subject thereto. The buyer assumes the risk to persons or property arising from the use or handling of this product and accepts the product on that condition.



KENAGRO LTD,
Agias Fylaxeos & Zinonos Rossidi 2,
2/F, P.C. 3082 Limassol, Cyprus
E-mail: info@kenagro ltd.com